

---

# The Role and Impact of SSMYM Campus, Siraha in Promoting Higher Education: A Case Study

Bharosh Kumar Yadav<sup>1\*</sup>, Ramhit Yadav<sup>2</sup>

<sup>1</sup>Tribhuvan University, Institute of Engineering, Purwanchal Campus, Department of Mechanical Engineering, Nepal

<sup>2</sup>Tribhuvan University, Suryanarayan Satyanarayan Morbaita Yadav Multiple Campus, Siraha, Nepal

\*Corresponding author: [bharosh@ioepc.cdu.np](mailto:bharosh@ioepc.cdu.np)

<https://doi.org/10.3126/oas.v3i1.78090>

---

## Abstract

This case study explores the role and impact of Suryanarayan Satyanarayan Morbaita Yadav Multiple (SSMYM) Campus in promoting higher education in Siraha, Nepal. As a key academic constituent campus of Tribhuvan University, SSMYM Campus serves a diverse student population with programs spanning science, management, education, and humanities. The study highlights the campus's contributions to social transformation, accessibility to applied education, and regional development. Challenges such as limited infrastructure, faculty shortages, and research gaps are identified. The research emphasizes strategies to address these challenges, including enhanced Tribhuvan University (TU) policies, stakeholder involvement, and curriculum reforms aligned with local and global demands. The findings underscore the need for targeted interventions to strengthen capacity of SSMYM campus to drive educational and socio-economic growth.

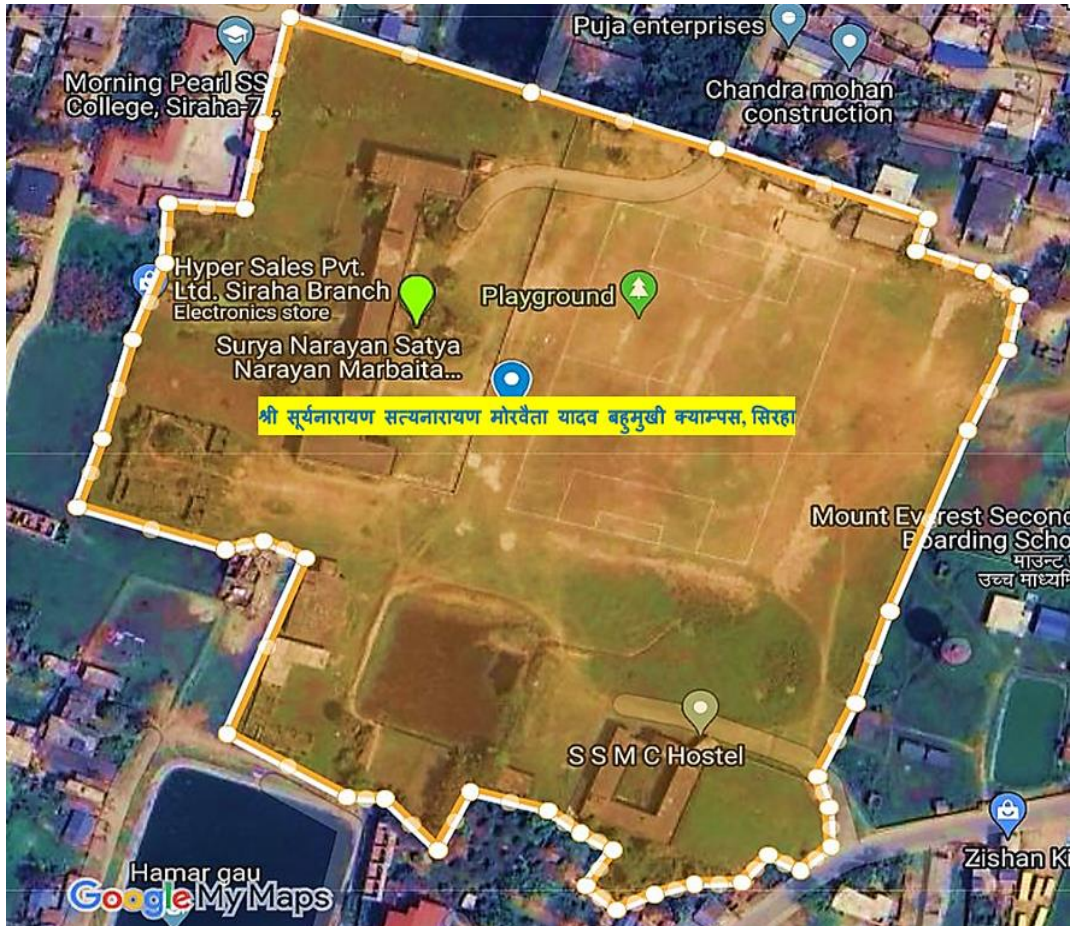
**Keywords:** Higher Education, Applied Education, Social Transformation, Rural Development, Curriculum Improvement, Educational Policies

---

## Introduction

### Background of SSMYM Campus Siraha

Suryanarayan Satyanarayan Morbaita Yadav Multiple (SSMYM) Campus, a constituent campus of Tribhuvan University (TU), situated in Siraha, Nepal, was established with the vision of providing accessible and affordable higher education to the local community. Geographically located at latitude 26.710N, longitude 86.480E, and elevation 111 m, SSMYM Campus is one of the oldest government higher education institutions of higher education. It is the largest applied campus supported by the Government of Nepal (GoN) and occupies 3.6578 hectares of land (5 Bighas and 8 Kathas) in the heart of Siraha city, where the central campus is located as shown in Figure 1 (Yadav et al., 2020, 2024; SSMYM, 2024). In addition, the campus includes 3.8273 hectares of land (5 Bighas and 13 Kathas) close to the east-west Mahendra highways in Jamdaha, Chowharwa.

**Figure 1** SSMYM Campus Map and Land

(Source: Google map)

As an affiliate of Tribhuvan University, the campus offers programs in science, mathematics, commerce, and humanities. As seen from the front of the campus in Figure 2, SSMYM Campus has grown over the years to become a significant educational hub in the Siraha district, serving students from a variety of socioeconomic backgrounds. Its mission is to bridge the gap in higher education accessibility, particularly in rural areas, while fostering academic excellence and personal development (SSMYM, 2024).

**Figure 2** Front View of the Main Building of SSMYM Campus



(Source: eKantipur, 2024)

## Problem Statement

Despite its significant contributions, SSMYM Campus faces numerous challenges, including inadequate infrastructure, limited faculty resources, and low funding. These issues hinder the campus' ability to fully realize its potential and meet the growing demand for quality education in the region. Moreover, there is a lack of comprehensive evaluation of the campus's impact on local higher education and socio-economic development, making it difficult to strategize improvements effectively.

## Research Questions

1. What role does SSMYM Campus play in promoting higher education in Siraha?
2. How has the campus impacted the local community socio-economically?
3. What are the key challenges faced by SSMYM Campus in delivering quality education?

## Objectives

1. To analyze the role of SSMYM Campus in enhancing access to higher education.
2. To evaluate the socio-economic contributions of the campus to the Siraha community.

3. To identify challenges and propose recommendations for improving the campus' outcomes.

## **Significance and Contribution**

This study highlights the pivotal role of SSMYM Campus in shaping the educational landscape of Siraha district. By addressing the campus's contributions and challenges, the research aims to provide actionable insights for TU policymakers, educators, and stakeholders. The findings will underscore the need for targeted investments and strategies to strengthen the campus's capacity, thereby enhancing its role in regional development.

## **Review of Literature**

Higher education empowers individuals, drives innovation, and supports economic growth. In rural Nepal, institutions like SSMYM Campus help bridge educational gaps and promote equity. Aligning education with local socio-economic needs ensures sustainable development (SSMYM, 2024). Studies highlight that quality higher education in rural areas improves livelihoods, civic engagement, and community resilience (Zhang & Fan, 2024). However, inadequate resources, faculty training, and research infrastructure often hinder these outcomes (Kusma, 2022). Overcoming these barriers requires understanding rural higher education. Nepal's 11 universities and 1,432 institutions support socioeconomic development through mainstream education (Acharya et al., 2022). Tribhuvan University, established in 1959, is Nepal's leading institution for national development (Acharya et al., 2022; Bhatta & Mehendale, 2021). Despite expanded access, challenges remain in ensuring equity, efficiency, quality, and relevance in higher education (Bhatta & Mehendale, 2021). Government funding for social sciences is declining despite their role in leadership development. Prioritizing technical fields may hinder holistic growth, though initiatives address challenges. Wallenius examines Singh's impact on Nepali and global education trends (Bhatta & Mehendale, 2021; Wallenius, 2024). Studies on higher education use reliable metrics to assess learning. This study explores sustainable teaching in Nepal's applied campuses, addressing challenges, mitigation strategies, and stakeholder roles. A literature gap exists on long-term solutions, which this research aims to bridge (Aryal et al., 2019; Bangash et al., 2022; Berman et al., 2024; Chang-Tik & Goh, 2023; Chang-Tik & Song, 2023; Hao & Leung, 2023; Harrop & Turpin, 2013; King & Sondhi, 2018; Qureshi, 2023; Rhein & Phillips, 2024; Sondhi & King, 2017; Thomas, 2017, 2019).

## **Research Approach & Design**

This section thoroughly analyzes the research approaches and design components to support the key roles of SSMYM Campus, Siraha, focusing on its

programs, faculty, communication medium, infrastructure, and research development.

## **Scenario of Programs and their Strength**

### ***Science***

The science program at SSMYM Campus provides foundational knowledge in physics, chemistry, math, and biology, preparing students for further studies. However, it faces challenges with laboratory facilities and access to updated materials.

### ***Management***

The management program develops skills in business, finance, and organizational management, attracting many students. However, limited faculty expertise in emerging business trends presents a challenge.

### ***Education***

The education program prepares future teachers, focusing on pedagogy, curriculum design, and educational psychology. Despite its importance in addressing rural teacher shortages, its effectiveness is limited by a lack of practical teaching opportunities.

### ***Humanities***

The arts and humanities program fosters critical thinking and cultural awareness through courses like literature, history, and sociology. However, it faces challenges with declining interest and fewer resources compared to science and management.

## **Scenario of Faculties and Staffs**

### ***Faculties Strength***

SSMYM Campus has a dedicated faculty, but the increasing student enrollment exceeds the number of qualified faculty. Continuous professional development and specialized training are needed to improve teaching quality.

### ***Staffs Strength***

Limited staffing and inadequate training for non-teaching staff hinder the efficiency and service delivery at the campus.

## **Impact of English Language in Teaching and Learning**

Using English as the medium of instruction opens global opportunities but poses challenges for students from non-English-speaking backgrounds, hindering comprehension and engagement.

## Scenario of Campus Infrastructure

The campus infrastructure, including classrooms, libraries, and labs, struggles to meet the needs of a growing student number. Upgrading labs and library resources is a key priority, as shown in Figure 3.

**Figure 3** Pictures of (a) Classrooms, (b) Library, (c) Laboratory, and (d) Administrative Office of SSMYM Campus



(a) Classrooms

(b) Library



(c) Laboratory

(d) Administrative Office

(Source: SSMYM, 2024)

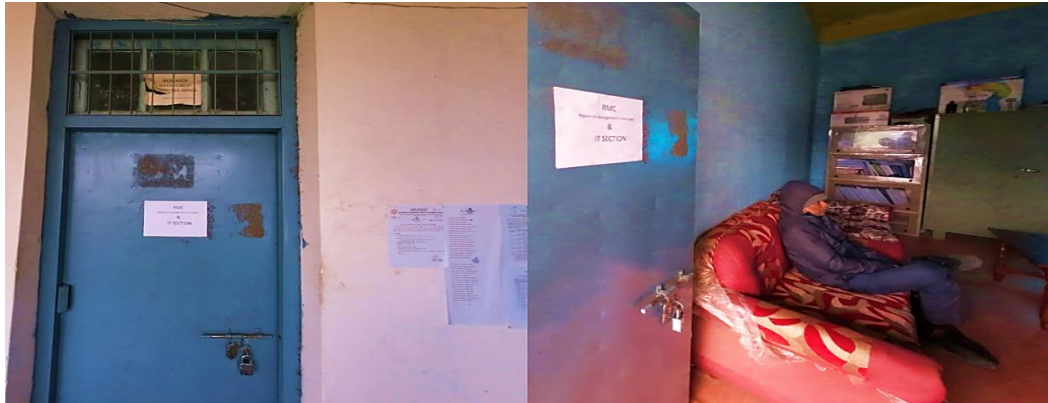
## Scenario of Research and Development Works

Research at SSMYM Campus faces challenges due to limited funding and resources. Efforts to integrate research, foster collaborations, and establish research centers aim to enhance academic quality and address local issues.

### *Research Management Cell (RMC)*

The institution is in the early stages of developing infrastructure for research activities. The RMC has basic facilities, including a laptop, computer, projector, and furniture, with a ten lakh grant from the UGC for research resources, as shown in Figure 4.

**Figure 4** SSMYM Campus RMC Office



(Source: SSMYM, 2024)

The institute offers a seminar hall for research activities and the RMC promotes research through rewards, penalties, and quality measures. It focuses on research support, quality development, and research publication, with faculty limited to one grant proposal per season.

### ***Information and Communications Technology (ICT)***

ICT stands for Information and Communications Technology, encompassing tools for network-based control, telecommunications, smart building management, and audiovisual systems. Figure 5 shows ICT infrastructure of SSMYM campus.

**Figure 5** SSMYM Campus ICT Lab

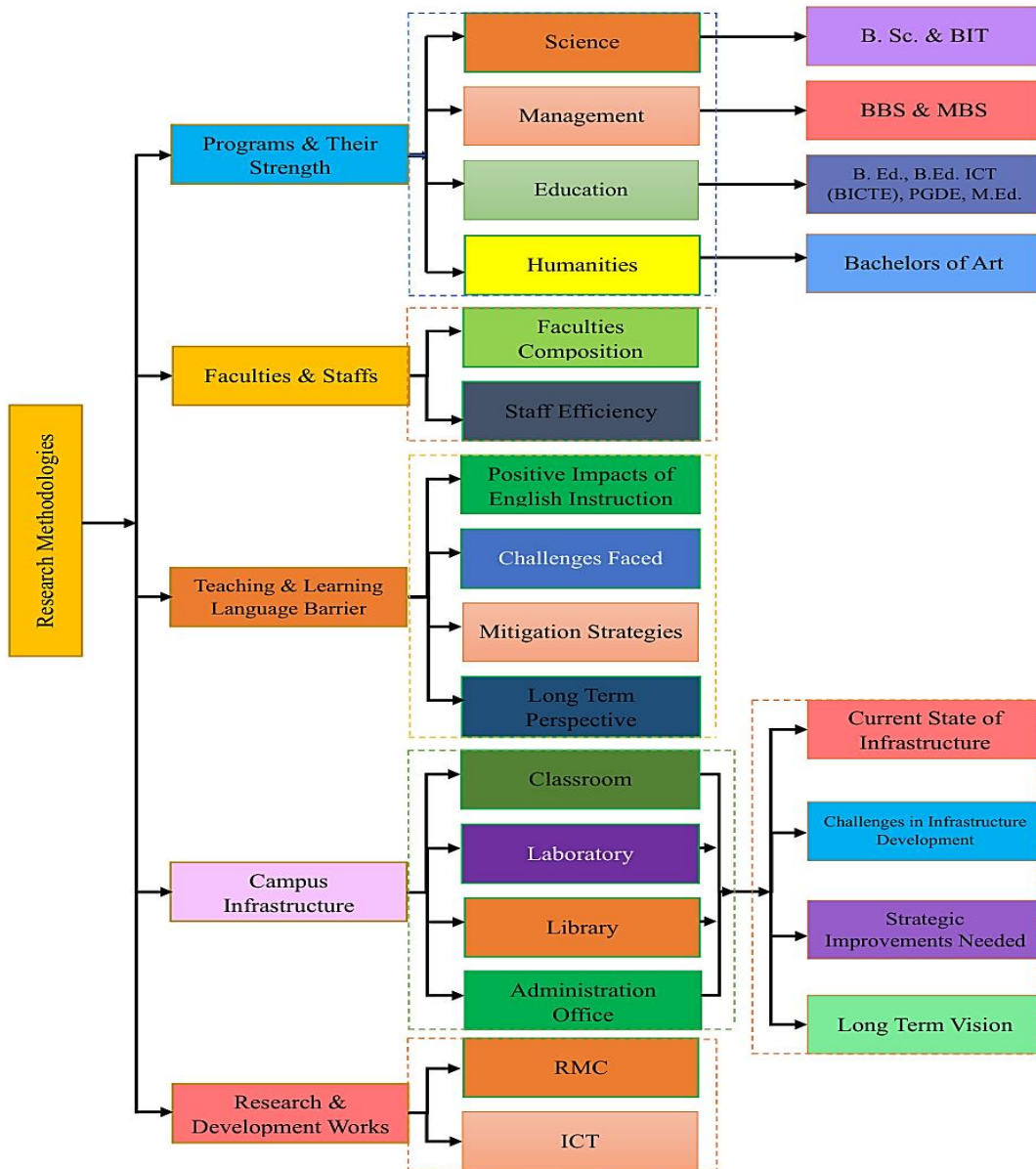


(Source: SSMYM, 2024)

## Results and Discussions

The case study on SSMYM Campus, Siraha examines the impact of its programs, faculty, English language, infrastructure, and research. The research framework is shown in Figure 6.

**Figure 6** Flow Chart Illustrating the Methodology of the Case Study

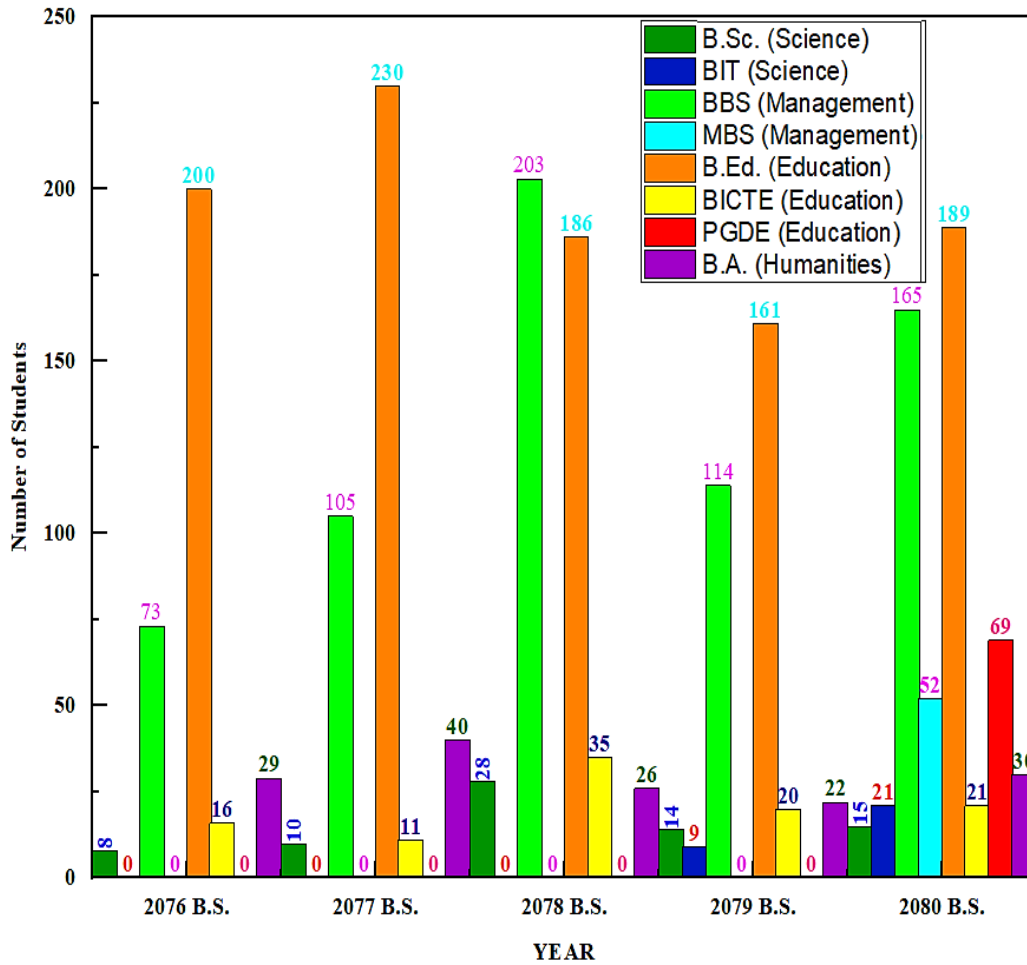




## Programs and their Strength

SSMYM Campus offers diverse academic programs that cater to student aspirations and contribute to socio-economic development. The student distribution by category from 2076 BS to 2080 BS is shown in Figure 7.

**Figure 7** SSMYM Campus Student Distribution Strength 2076-2080 BS



(Source: SSMYM, 2024)

SSMYM Campus offers programs in Science (B.Sc., BIT), Management (BBS, MBS), Education (B.Ed., M.Ed., PGDE, BICTE), and Humanities (BA). Between 2076 and 2080 BS, the largest number of students were from Education (1,394), followed by Management (714), Humanities (147), and Science (77). These programs cater to diverse student needs and community development.

### ***Science Program***

The science program at SSMYM Campus excels in coursework and practical sessions in physics, chemistry, math, and biology, preparing students for competitive and research fields. However, outdated lab equipment and teaching tools limit its potential. Despite the program's appeal, only 77 students enrolled between 2076-2080 BS, highlighting the need for a strategic plan to attract more students.

### ***Management Program***

The management program at SSMYM Campus is popular for its practical relevance, offering courses in finance, marketing, and entrepreneurship. While the curriculum integrates theory with real-world applications, strengthening faculty expertise and adding courses on emerging trends like digital marketing could enhance the program. It ranks second in student enrollment, with 712 students enrolled between 2076-2080 BS.

### ***Education Program***

The education program addresses the region's need for qualified teachers, focusing on pedagogy, curriculum development, and educational psychology. Despite its strengths, the lack of internships and access to innovative tools limits its potential. With 1,394 students, it leads in enrollment, likely due to abundant opportunities in Madhesh Province, and performs satisfactorily compared to other streams.

### ***Humanities Program***

The arts and humanities program promotes creativity, critical thinking, and cultural awareness, covering literature, history, and sociology. However, it faces challenges like declining enrollment and limited resources. With only 147 students from 2076–2080 BS, the program struggles to attract and engage students.

SSMYM Campus programs cater to diverse academic and professional needs, with strengths in various fields. Continuous improvements in infrastructure, faculty training, and curriculum will enhance their impact:

- **Science:** The science program develops analytical thinking and prepares students for research careers. Its strength is the curriculum, though laboratory infrastructure needs improvement.
- **Management:** This program provides practical skills for business and entrepreneurship, making it ideal for aspiring professionals in commerce.
- **Education:** The program focuses on pedagogy and curriculum design to address the teacher shortage, though it needs more practical training opportunities.

- **Arts/Humanities:** This program fosters cultural awareness and critical thinking, essential for understanding societal dynamics.

## **Faculties and Staffs**

### ***Faculty Composition***

SSMYM Campus has 47 faculty members, balancing seasoned educators and emerging professionals. However, the high student-to-teacher ratio and lack of specialized training hinder effective management of academic demands.

### ***Staff Efficiency***

With only 21 non-teaching staff, administrative tasks at SSMYM Campus are often delayed, impacting basic amenities and academic activities. Limited professional development and reliance on part-time faculty exacerbate the challenges in faculty and staff management.

## **Teaching and Learning language Barrier**

English as the medium of instruction at SSMYM Campus enhances global opportunities but presents challenges, particularly for students from non-English backgrounds. These barriers affect the overall teaching and learning process.

### ***Positive Impacts of English Instruction***

**Global Competence.** English proficiency enables access to global academia, research, and job markets.

**Uniformity in Education.** English standardizes communication, curriculum.

**Competitive Edge.** English aids business, technology, relations.

### ***Challenges Faced***

**Limited Proficiency.** Limited English exposure hampers student participation at SSMYM Campus.

**Faculty Preparedness.** Inconsistent English proficiency affects instruction clarity.

**Student Engagement.** Language barrier reduces student participation and confidence.

**Resource Accessibility.** Lack of native language materials hinders learning.

### ***Mitigation Strategies***

**Language Support Programs.** English labs, workshops can improve proficiency.

**Bilingual Resources.** Bilingual materials can enhance comprehension.

**Faculty Training.** Regular faculty training improves English instruction.

**Peer Learning Initiatives.** Peer learning groups boost English confidence.

### *Long-Term Perspective*

SSMYM Campus needs a policy that integrates language training with academic programs to improve inclusivity and global competitiveness. In Madhesh Province, where Maithili and Bhojpuri are spoken, low Nepali and English proficiency creates a significant barrier for underprivileged students.

## **Infrastructure of Campus**

Infrastructure of SSMYM Campus needs significant improvements to support the growing student body and expanding programs. While classrooms have basics, technological upgrades, better lab facilities, and enhanced library resources are required.

### *Classrooms*

**Current State of Infrastructure.** Classrooms lack modern aids, overcrowding, and poor lighting and ventilation hinder effective teaching and learning.

**Challenges in Infrastructure Development.** Limited funding, space, and power interruptions hinder classroom upgrades.

**Strategic Improvements Needed.** Resource allocation for digital aids, furniture, and space is needed, along with backup power and renovations.

**Long-Term Vision.** Create digital classrooms, a centralized block with ventilation, and hybrid learning setups.

### *Laboratories*

**Current State of Infrastructure.** Labs are functional but lack updated equipment, limiting advanced practical learning.

**Challenges in Infrastructure Development.** High costs and inadequate funding hinder lab equipment procurement.

**Strategic Improvements Needed.** Investing in lab upgrades, partnerships, staff training, and digital resources will enhance learning.

**Long-Term Vision.** Create advanced labs, integrate research spaces, and promote interdisciplinary collaboration.

## ***Library***

**Current State of Infrastructure.** The library has outdated resources, limited seating, and minimal digital access, hindering its academic role.

**Challenges in Infrastructure Development.** Limited budget, inadequate seating, and lack of tech hinder library growth; smart boards and e-learning are needed.

**Strategic Improvements Needed.** Expand library resources, improve management, and create a sustainable, eco-friendly campus.

**Long-Term Vision.** Create a digital library, enhance research resources, and upgrade facilities with collaborative spaces.

## ***Administrative Offices***

**Current State of Infrastructure.** The admin office lacks space, technology, and recreational areas, affecting efficiency and student activities.

**Challenges in Infrastructure Development.** Lack of automated workflows, inadequate office space, outdated communication tools, and non-inclusive infrastructure for disabled students.

**Strategic Improvements Needed.** Digitalize administrative processes, expand office space, and train staff in digital tools. Establish dedicated research centers with modern equipment to support academic research.

**Long-Term Vision.** Automate systems, build a central office, and improve collaboration. Invest in scalable infrastructure and partner with government, NGOs, and donors for sustainable growth, enhancing impact of SSMYM Campus on education sector of Siraha.

## **Research and Development Works**

### ***Research Management Cell (RMC)***

#### **Current Status of Research Activities.**

- **Limited Engagement:** Minimal faculty-student research involvement.
- **Insufficient Funding:** Funding limits research capabilities.
- **Lack of Facilities:** Lack of labs hinders research.
- **Publication Challenges:** Limited journal access hinders publishing.

**Efforts and Initiatives.** Despite these challenges, there are emerging efforts to encourage R&D at SSMYM Campus:

- **Integration into Curriculum:** Research integrated into programs.
- **Workshops and Training:** Workshops enhance research skills.

- **Partnerships:** Exploring research partnerships globally.

#### **Challenges in Promoting R&D.**

- **Resource Constraints:** Infrastructure, funding hinder research.
- **Awareness and Motivation:** Low research awareness limits participation.
- **Policy Support:** Policy gaps hinder research.

**Recommendations for Enhancing R&D.** To bolster research and development at SSMYM Campus, the following steps are proposed-

- **Establish Research Centers:** Establish modern research units.
- **Funding Mechanisms:** Secure funding via collaborations.
- **Training and Capacity Building:** Train faculty, students regularly.
- **Publication Support:** Launch journal with writing mentorship.
- **Focus on Applied Research:** Focus research on local needs.

#### ***Information and Communications Technology (ICT)***

R&D is vital for academic excellence and real-world impact. While SSMYM's research culture is nascent, strategic efforts show promising growth potential.

**Strategic Vision for R&D at SSMYM Campus.** A long-term vision for research at SSMYM Campus should include-

- **Regional Relevance:** Research for local development.
- **Interdisciplinary Approach:** Promote interdisciplinary research collaborations.
- **Global Engagement:** Join global research networks.

By addressing these areas, SSMYM Campus can become an academic innovation hub, fostering both intellectual growth and regional socio-economic development.

## **Challenges, Strategies and Solutions in Promoting Higher Education**

### **Challenges**

Promoting higher education at SSMYM Campus faces numerous obstacles, which can be categorized into systemic, operational, and societal challenges:

### ***Inadequate Funding***

- Financial limits hinder infrastructure, faculty, and resources.
- Few scholarships limit access.
- The TU is neither funding to enhance academic, creating permanent faculties sits, R&D fundings, No proper training & seminars.
- Governments neglect teacher development and campus infrastructure.

### ***Infrastructure Deficiencies***

- Poor facilities hinder education quality.
- Limited digital resources hinder teaching.

### ***Faculty and Staff Constraints***

- High student-teacher ratio limits interaction.
- Limited training hinders professional growth.
- Insufficient permanent faculties teachers. Only 47 in number of faculties including contract and permanent faculties number.

### ***Research and Development Gaps***

- Lack of research facilities restricts innovation.
- No external collaboration limits exposure.
- Faculty members lack a research and development culture, with few publishing in Q1, Q2, Q3 journals or Scopus, highlighting a significant gap in research efforts.

### ***Language and Communication Barriers***

- English reliance challenges non-English students.
- Lack of language support.

### ***Policy and Governance Issues***

- Lack of clear policies.
- Limited autonomy under Tribhuvan University restricts local solutions.

### ***Community Engagement***

- Weak community engagement limits support.
- Lack of industry and alumni collaboration limits opportunities.

- Community and guardians' indifference to campus status results in poor accountability, declining student numbers, and academic deterioration in Siraha, Madhesh Province.

### ***Low Enrolment in Key Programs***

- Declining interest in humanities programs.
- Resource constraints limit science enrollment.

These challenges highlight the need for systemic reforms, strategic investments, and stakeholder engagement. Addressing them is vital for SSMYM Campus to become a transformative force in Siraha's higher education.

## **Strategies and Solutions**

Addressing the challenges faced by SSMYM Campus requires a multifaceted and collaborative approach. Below are strategies and solutions that can help transform the campus into a hub for higher education excellence:

### **Enhancing Financial Resources:**

**Strategy:** Advocate for increased government funding and seek grants from national and international organizations.

**Solution:** Establish endowment funds and scholarships for economically disadvantaged students, while encouraging alumni donations and fundraising campaigns for sustainable financial support.

### **Upgrading Infrastructure:**

**Strategy:** Prioritize infrastructure development through phased implementation plans.

**Solution:** Modernize classrooms, labs, libraries, and connectivity.

### **Strengthening Faculty and Staff Development:**

**Strategy:** Invest in faculty and staff training partnerships.

**Solution:** Organize workshops, development programs, exchanges.

### **Promoting Research and Development:**

**Strategy:** Establish research centres, foster collaborations.

**Solution:** Secure grants, encourage research projects, integrate.



## **Addressing Language Barriers:**

**Strategy:** Offer language support programs tailored to the needs of non-English-speaking students.

**Solution:** Introduce English courses, hire specialists, bilingual methods.

## **Policy and Governance Reforms:**

**Strategy:** Collaborate with Tribhuvan University for autonomy.

**Solution:** Formulate strategic goals with stakeholder input.

## **Community and Industry Engagement:**

**Strategy:** Strengthen relationships with local communities and industries to align educational programs with societal and employment needs.

**Solution:** Organize community outreach programs, develop internship opportunities, and invite industry experts for guest lectures and mentorship.

## **Boosting Enrolment in Key Programs:**

**Strategy:** Revitalize interest in arts and humanities while strengthening science and management programs.

**Solution:** Introduce interdisciplinary courses, counselling, and workshops.

These strategies, when effectively implemented, can not only address the pressing challenges but also position SSMYM Campus as a beacon of higher education excellence in the region.

## **Roles of Various Stakeholders**

The successful promotion of higher education at SSMYM Campus requires active collaboration among multiple stakeholders. Each stakeholder has a unique role to play in addressing the challenges and implementing the strategies identified earlier.

### ***Tribhuvan University***

**Role.** As the affiliating body, Tribhuvan University (TU) has a significant influence over academic and administrative aspects of SSMYM Campus.

#### **Responsibilities.**

- Provide financial and technical support to improve infrastructure and facilities.
- Ensure as well increase the seat of permanent faculty member and non-teaching staffs. Should make a plan every 6 months or a year to take TU Public Service

Commission exam so that contract teachers & staffs can be permanent. If the contract faculties leave after some experience of work which is really very much loss for the campus as well as to maintain the efficient education quality experience.

- Offer regular training and professional development programs for faculty and administrative staff.
- Ensure the timely revision of curricula to align with global trends and local needs.
- Facilitate research collaboration between SSMYM Campus and other TU-affiliated campuses.
- TU has been accessed the affiliation start new major even to those campuses who are not eligible based on even minimum teaching and learning infrastructure or the academic environment.
- It is evident that TU has only concentrated on awarding certificates to students from the communities who are enrolled in applied campuses, like SSMYM Campus, due to the fact that TU manages the infrastructure including faculty members, classroom conditions, labs, libraries, and other necessities for teaching and learning activities very poorly.
- Implementing particular guidelines and an action plan against such activities that are deemed to be most disruptive to teaching and learning activities as well as the academic environment is necessary to ensure that universities and their constituent campuses are run smoothly and efficiently without any unnecessary disruption from student union, teachers union, and employee union.

### ***The Perspective of Guardians***

**Role.** Guardians play an important role in supporting and motivating students, as well as advocating for campus development.

#### **Responsibilities.**

- Actively participate in campus-related activities and forums to express expectations and feedback.
- Encourage students to pursue diverse programs offered by the campus.
- Advocate for better facilities and policies by engaging with campus leadership and local authorities.
- The distance between the campus and the guardians appears to be quite great since the guardians do not hold their students accountable, nor do they keep the campus informed or communicate with them.

### ***Local Communities***

**Role.** The local community provides the primary student base for the campus and plays a pivotal role in its sustainability and growth.

#### **Responsibilities.**

- Support the campus through active engagement in development initiatives.
- Provide feedback to align campus programs with community needs.
- Collaborate with the campus to organize outreach programs, workshops, and cultural events.
- The society, community, and student's guardian do not put any interest to check, visit, try to know what is the situation of education teaching and learning status of the campus. It is pity that even guardians are not showing any accountability why and how is their students teaching and learning process and status. Therefore, the campus leader and the teaching faculties members seems no accountability and is also the big reason to decrease the student's number, decrement of student's choice as well as number from the applied campus, and this is the root cause of being decreasing the situation of academic institution specially in Madhesh province in general so as in Siraha, Nepal.

### ***Advocacy Environment***

**Role.** An enabling advocacy environment ensures that policies and strategies for the promotion of higher education are effectively implemented.

#### **Responsibilities.**

- Policymakers should formulate education-friendly policies that support infrastructure, research, and development.
- NGOs and civil society organizations can partner with the campus to raise awareness and provide additional resources.
- Advocacy campaigns can focus on the importance of higher education, gender equity, and skill development in rural areas.

By understanding and fulfilling their roles, these stakeholders can collectively address the challenges faced by SSMYM Campus and contribute to its transformation into a leading institution for higher education in the Siraha region.

## **Conclusions and Recommendations**

### **TU Policies**

Tribhuvan University, as the academic governing body, plays a crucial role in shaping the policies that influence SSMYM Campus. These policies determine academic standards, necessity of permanent faculty and staff members, curriculum

frameworks, and administrative processes. However, the lack of specific guidelines tailored to the unique challenges faced by rural campuses like SSMYM Campus has been a significant limitation. There is a pressing need for policies that support flexibility in curriculum design, encourage faculty development programs, and allocate dedicated funding for infrastructure and research growth.

## **Roles of Central and Provincial Government**

The central and provincial governments are instrumental in ensuring equitable access to quality higher education across Nepal. For SSMYM Campus, targeted interventions, such as increased funding, grants for faculty training, and infrastructure development, are essential. Provincial governments can also facilitate partnerships with local industries and organizations to promote applied education. Furthermore, aligning government initiatives with the campus's goals can enhance its ability to address regional socio-economic challenges effectively.

## **Scope for Improvement of Curriculum**

The curriculum at SSMYM Campus must evolve to meet the changing demands of the country and global trends. Specific improvements include:

### ***Relevance to Country Demands and Industry***

Courses should be designed to address Nepal's socio-economic needs, such as agrarian reforms, sustainable energy, and technological innovation. Collaborations with local industries can help shape a curriculum that prepares students for employment and entrepreneurship.

### ***Interdisciplinary Focus***

Incorporating interdisciplinary programs that integrate science, management, and humanities will foster critical thinking and problem-solving skills. Such a focus can also enhance students' adaptability in a rapidly changing job market.

### ***International Perspective***

Globalization demands a curriculum that prepares students for international opportunities. This includes offering foreign language courses, exchange programs, and modules on global trends in science, technology, and business.

### ***Soft Skills and Leadership Development***

To ensure holistic development, the curriculum should emphasize soft skills such as communication, teamwork, and leadership. Workshops, extracurricular activities, and experiential learning initiatives can support these goals.

## Acknowledgments

The authors want to thank the Tribhuvan University, and Suryanarayan Satyanarayan Morbaita Yadav Multiple Campus Siraha, Nepal. We graciously acknowledge and like to thank for giving us an excess of valuable data, and information to accomplish this research.

## Contribution of Authors

**Ramhit Yadav:** Conceptualization, design, data collection, finalization of draft

**Bharosh Kumar Yadav:** data analysis, draft, finalization of draft

## Conflict of Interest

Authors declare that they have no conflict of interest.

## References

- Acharya, M., Acharya, K. P., & Gyawali, K. (2022). Higher education status in Nepal: Possibilities and prospects. *The Educator Journal*, 10(1), 105–118.
- Aryal, K. J. K. (2019). *Education for the development of Nepal* (Vol. 1). Shanti Prakashan.
- Bangash, Y. K., & Virdee, P. (2022). Partitioning the University of the Panjab, 1947. *Globalisation, Societies and Education*, 59(4), 423–445.
- Berman, N., Mehta, D., & Matsuo, A. (2024). The sticky campus in Japan: Re-evaluating campus spaces. *Globalisation, Societies and Education*, 22(5), 763–772.
- Bhatta, P., & Mehendale, A. (2021). *The status of school education in Nepal*. In P. M. Sarangapani & R. Pappu (Eds.), *Handbook of Education Systems in South Asia* (pp. 639–664). Springer Singapore.
- Chang-Tik, C., & Goh, J. N. (2023). Social and cognitive dimensions of collaboration in informal learning spaces: Malaysian social science students' perspectives. *Interactive Learning Environments*, 31(2), 609–623.
- Chang-Tik, C., & Song, B.-K. (2023). Active learning in informal learning spaces: Science students' experiences. *Pedagogies: An International Journal*, 18(3), 374–391.
- eKantipur. (2024, September 11). Kantipur, News, Nepal.
- Hao, Y., & Leung, M. W. H. (2023). Wandering at the crossroads: Gendered mobility aspirations in the study-to-work transition of Chinese graduates of Dutch universities. *Ethnic and Racial Studies*, 46(14), 3123–3144.

- Harrop, D., & Turpin, B. (2013). A study exploring learners' informal learning space behaviors, attitudes, and preferences. *New Review of Academic Librarianship*, 19(1), 58–77.
- King, R., & Sondhi, G. (2018). International student migration: A comparison of UK and Indian students' motivations for studying abroad. *Globalisation, Societies and Education*, 16(2), 176–191.
- Kumsa, M. J. (2022). Clinical placement challenges associated with radiography education in a low-resource setting: A qualitative exploration of the Ethiopian landscape. *Radiography*, 28(3), 634–640.
- Qureshi, M. A. (2023). Factors affecting students' learning performance through collaborative learning and engagement. *Interactive Learning Environments*, 31(4), 2371–2391.
- Rhein, D., & Phillips, B. (2024). American international students' motivation to study abroad in Thailand. *Globalisation, Societies and Education*, 22(5), 790–805.
- Sondhi, G., & King, R. (2017). Gendering international student migration: An Indian case-study. *Journal of Ethnic and Migration Studies*, 43(8), 1308–1324.
- Suryanarayan Satyanarayan Morbaita Yadav Multiple Campus, Siraha. (2024, September 12). Documents of Campus. Tribhuvan University, Nepal.
- Thomas, S. (2017). The precarious path of student migrants: Education, debt, and transnational migration among Indian youth. *Journal of Ethnic and Migration Studies*, 43(11), 1873–1889.
- Thomas, S. (2019). Student migrants and the diasporic imagination: Educational migration, nationhood, and the making of Indian diaspora in the United States. *Interventions*, 21(2), 255–272.
- Wallenius, T. J. (2024). Towards a global history of education in the Himalaya: The case of Jaya Prithvi Bahadur Singh. *Globalisation, Societies and Education*, 22(5), 806–822.
- Yadav, B. K., Kumar, P. Sudhakar, R. K., Ratna, T. B., & Priya, S. S. (2020). Sustainable green campus in Nepal: 3E analysis. *International Journal of Low-Carbon Technologies*, 16(2), 531–542.
- Yadav, B. K., Yadav, R., Mehdi, J., Priya, S. S., & Ratna, T. B. (2024). Decarbonizing airport using solar and wind farm: A case of Biratnagar, Nepal. *e-Prime - Advances in Electrical Engineering, Electronics and Energy*, 8, 100583.
- Zhang, N., & Fan, H. (2024). The intergenerational mobility effects of higher education expansion in China. *International Journal of Educational Development*, 111, 103169.